

Pocket CowCard Users Manual

© 2002 – 2007 Valley Agricultural Software
<http://www.vas.com>

Table of Contents

Pocket CowCard Setup.....	3
Setup Overview.....	3
Step-By-Step Setup Instructions.....	4
Step 1: Locate the SD Card.....	4
Step 2: Lookup the DairyComp Serial Number.....	4
Step 3: Notify the VAS Registration Desk.....	4
Step 4: Prepare the Handheld.....	5
Step 5: Download Updates through DairyComp.....	6
Step 6: Installing Pocket CowCard on the Handheld.....	7
Installing from High-Speed Internet Access.....	7
Installing from Dial-Up Internet Access.....	8
Step 7: Enable the SERVER Command in DairyComp.....	10
Step 8: Refresh Herd Data in Pocket CowCard.....	10
Viewing Cow Data.....	11
Looking at Individual Cow Data.....	11
Changing the Items Displayed on the ITEM Tab.....	12
Changing an Item that is Displayed.....	12
Adding an Item to the List.....	12
Deleting an Item from the List.....	12
Entering Data.....	13
Enabling Data Entry.....	13
Entering Events.....	13
RFID Data Entry.....	14
Batch Entry.....	15
Batch Command Form.....	16
Expert Batch Command Form.....	16
Batch Bred Events Form.....	17
Command Lists.....	18
Making New Command Lists in DairyComp.....	18
Working With Command Lists.....	19
Pen Validation.....	20
Deleting and Posting a Command List.....	20
Delivering Posted Command Lists to DairyComp.....	20
Using the Vet Command List.....	21
Making the Vet List Command List.....	21
Entering Vet List Results.....	21
Entering Other Events.....	22
Entering Pregnant to a Previous Service OR Natural Service.....	23
Entering Abortions using Vet Entry.....	23
Using the Hospital Command List.....	24
Admin Menu.....	25
Update by DC305.....	25
Setup.....	25
Test Network.....	25

Pocket CowCard Setup

Setup Overview

1. Locate the SD card from VAS and note the PCC Number
2. Lookup the DairyComp Serial Number
3. Notify the VAS Registration Desk of the Serial Number and PCC Number
4. Setup the hand held and install ActiveSync software.
5. Download DairyComp updates from the VAS web site.
6. Install Pocket CowCard on the hand held (either manually or through the Internet).
7. Enable the SERVER command in DairyComp.
8. Refresh the herd data in the Pocket CowCard software.

Please note that if you are an end user, it is likely that steps 1-3 have already been done for you. If that is the case, start at step 4.

Step-By-Step Setup Instructions

Step 1: Locate the SD Card

Record the PCC serial number.

The PCC number is needed to generate the license certificate.



Step 2: Lookup the DairyComp Serial Number

Record the DairyComp serial number from the DairyComp Help menu > About.

The DairyComp serial number is also needed to generate the license certificate.



Step 3: Notify the VAS Registration Desk

You must either **call or email VAS to register** your PCC and DairyComp serial numbers.

- Call Susana at VAS (559) 686-9496 ext 499
- email register@vas.com

These numbers will be used by the VAS Web Updater to generate and install the license file.

Step 4: Prepare the Handheld

1. Charge the hand held battery
2. Charge the battery on your new hand held following the manufacturer's directions that were included within the package.
3. Install the ActiveSync software
Follow the manufacturer directions for installing Microsoft ActiveSync (the software that is included with the pocket PC).
 - (a) Put the CD in your CD-ROM drive
 - (b) When prompted, select **RUN** to install Microsoft ActiveSync.
 - (c) Do not connect the hand held until prompted.
 - (d) The first time you connect the hand held, select "Next". When you see the "Synchronization Setup Wizard", confirm that **all boxes are unchecked** and select "Next".



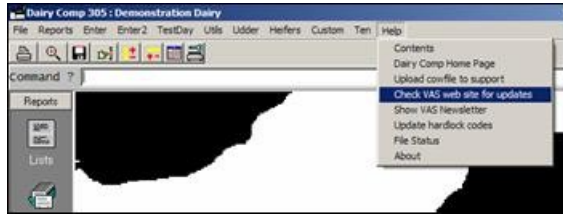
- (e) When you see the following screen on your PC, you know that your PC and hand held are successfully communicating.



Step 5: Download Updates through DairyComp

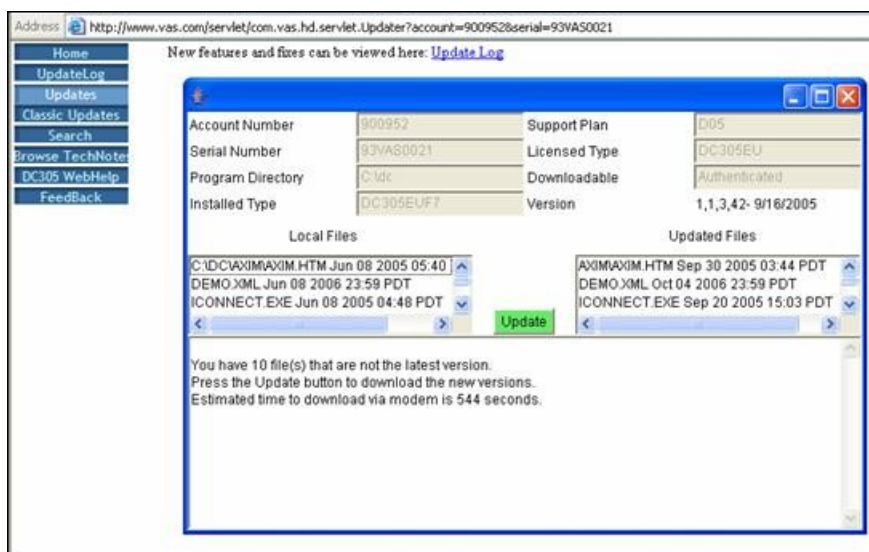
In DairyComp, go to the **Help** menu > “**Check VAS web site for updates**” to download all updates.

Note: Do not proceed until all updates are successfully downloaded.



1. There will be a prompt to launch the web browser, click **OK**.
2. Click **Yes** to install any java or applet software when prompted. These are required to verify your copy of Pocket CowCard.
3. When the Web Browser is loaded the VAS Web Updater should automatically start. If it does not, follow the instructions listed in your web browser.
4. In the VAS Web Updater, click the **Update** button (green) and wait for the message “You have the latest version”.

Once you have the latest updates, you will be ready to install Pocket CowCard on the hand held



Step 6: Installing Pocket CowCard on the Handheld

Follow the instructions appropriate for your Internet connection.

Installing from High-Speed Internet Access

This method works when the hand held is connected via USB cable OR cradle to a PC with an Internet connection OR when the pocket PC is connected directly to the Internet through a wireless network connection.

1. Tap the **Start menu** on the top of the hand held desktop and then tap **Internet Explorer**. If the address bar is not visible, select **View > Address Bar** menu to enable it.
2. Open the keyboard on the bottom right, select the **Address Bar** and enter www.vas.com/Axim



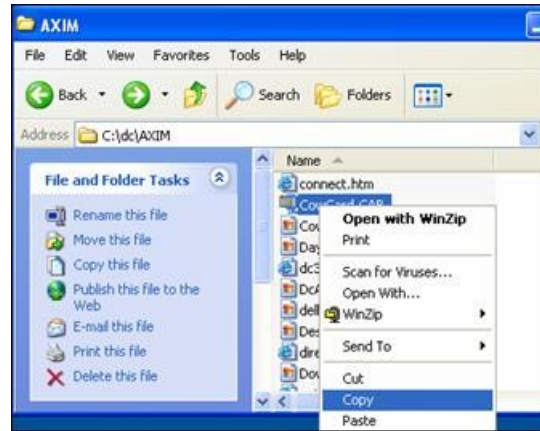
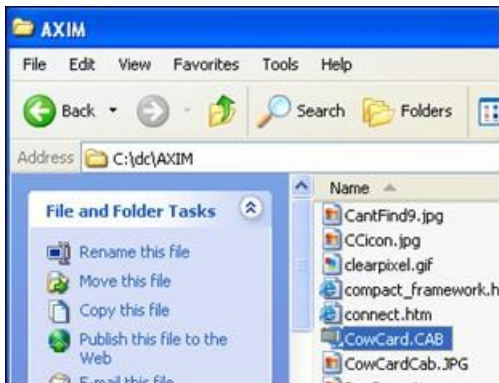
← Click using the **Enter** key on the right side of the hand held keyboard.

3. Tap the **CowCard.CAB** link to download the installer.
4. Tap **YES** to open/run the installer after downloading.



Installing from Dial-Up Internet Access

1. Double-left-click on the **My Computer** icon located on your Windows desktop.
2. Browse to the **DC\AXIM** folder and double-left-click it.

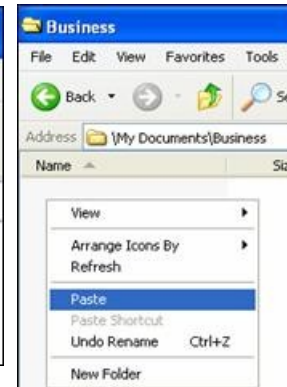


3. Locate the CowCard.CAB file.

4. **Right-click** on CowCard.CAB to display the context menu and **then left-click on Copy**.



5. Click on the Back button twice to return to **My Computer**
6. Double-left-click on **Mobile Device**
7. Double-left-click on **Business** folder
8. Right-click inside **Business** folder
9. **Left-click Paste**



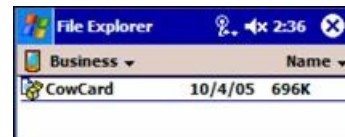
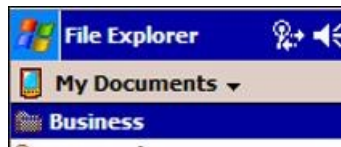
10. On the hand held: Tap **Start** , then Tap **Programs**.



11. In Programs, open **File Explorer**.



12. Tap **My Documents** > tap **Business** > then tap **CowCard**. Follow the prompts to complete the installation.



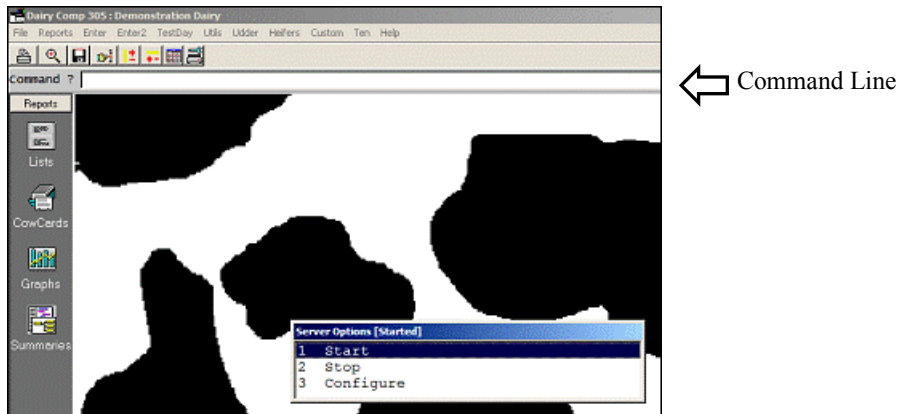
13. Verify the Installation was Successful.
On the hand held tap **Start**> **Programs**



← You will see the VAS CowCard icon listed there.

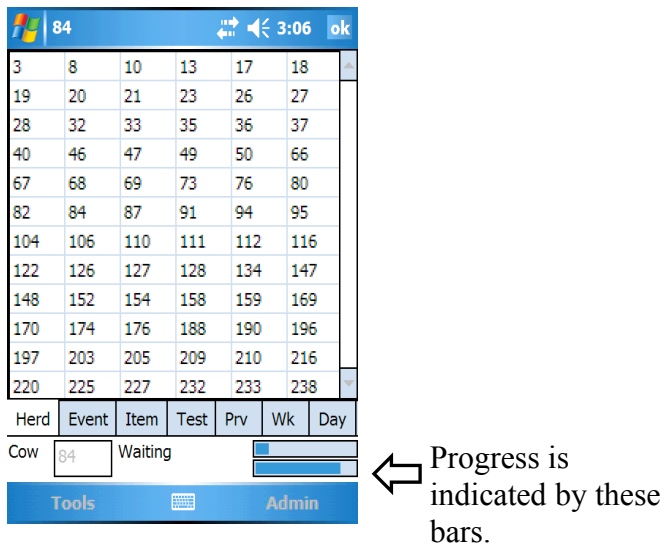
Step 7: Enable the SERVER Command in DairyComp

In DairyComp on the command line, type **SERVER**, then select **Start**.



Step 8: Refresh Herd Data in Pocket CowCard

1. DairyComp must be running with the cursor on the Command Line.
2. Place the hand held in the cradle and wait for ActiveSync to start.
3. Start Pocket CowCard. Tap **Tools > Refresh Herd**, progress is indicated by the blue bars in the lower right corner.

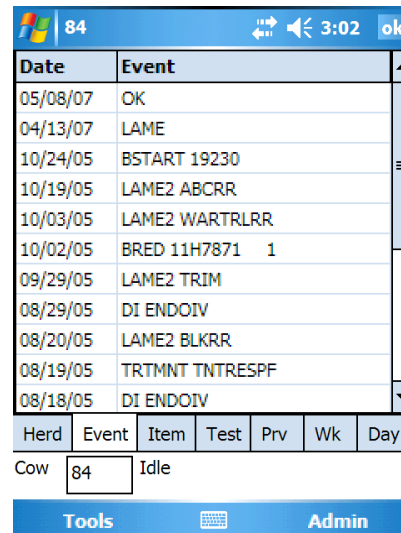
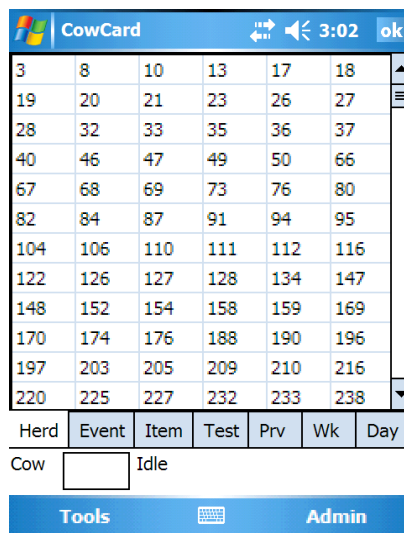


Viewing Cow Data

Looking at Individual Cow Data

Begin by refreshing the herd data in Pocket CowCard:

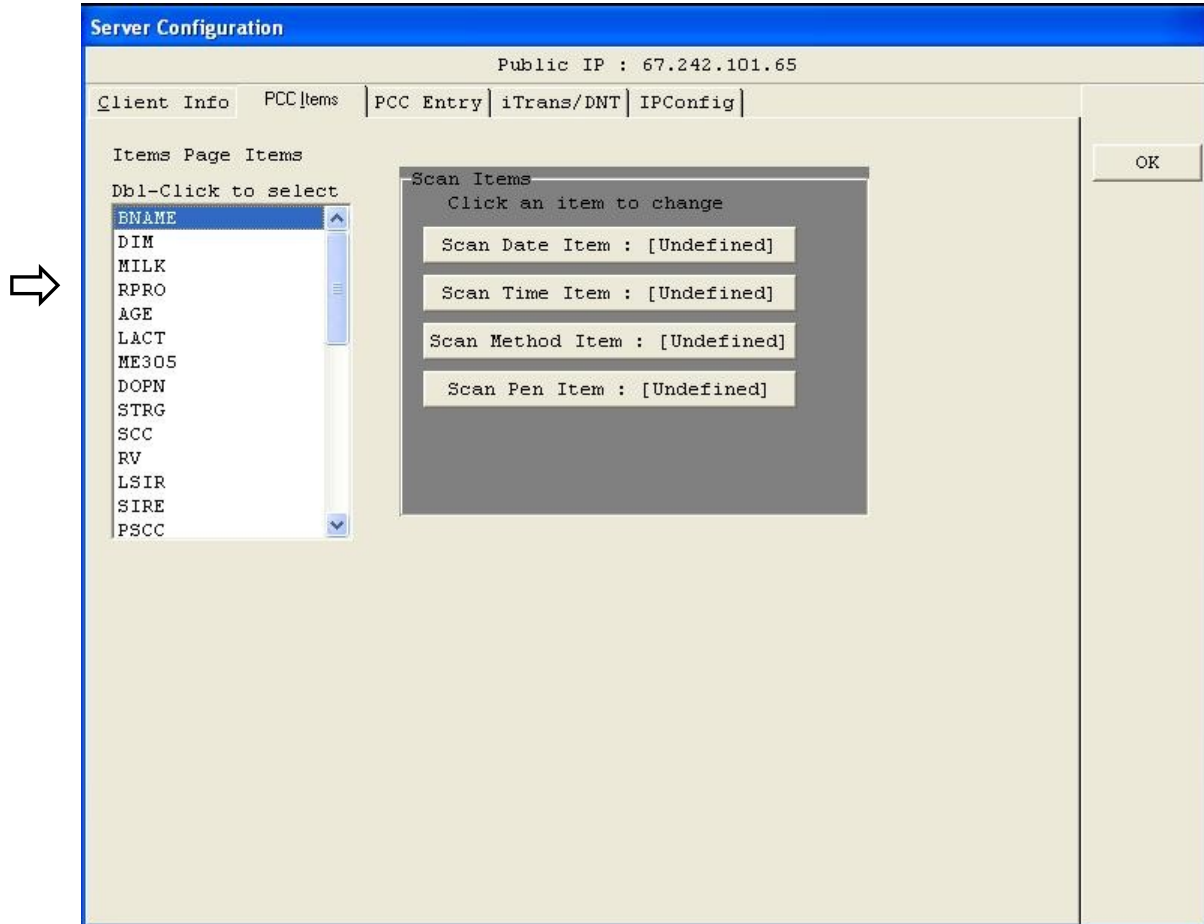
1. In the Pocket CowCard program, tap **Tools > Refresh Herd**. Progress is indicated by the blue bars in the lower right corner.
2. Tap a **cow number OR enter a number** in the “Cow” box to display information.



Tab	Description
Herd	All the cows in the herd. Each table cell contains a cow id.
Event	All the events for the current lactation beginning with the most recent event.
Item	List of selected items. This list can be customized using the SERVER command in DairyComp.
Test	Information for each test day for the current lactation.
Prv	Previous lactation fresh dates, conception dates, dry dates, milk and component totals.
Wk	Milk weights by week for the current lactation.
Day	Daily milk weights for the past seven days, seven day average production, and expected production (requires a daily milk interface to DairyComp).

Changing the Items Displayed on the ITEM Tab

By default the Pocket CowCard will display the items that are displayed in Page 1 in DairyComp. To customize these items, run the **SERVER** command in DairyComp and select **Configure**. Then left-click on **Axim Items** tab. All the items listed on the left side of the screen will be displayed on the item tab in Pocket CowCard.



Changing an Item that is Displayed

To change the item displayed double-left-click on the item. The DairyComp item list will be displayed. Browse to the item you wish to have displayed and double-left-click on it.

Adding an Item to the List

To add an item to the list, double-left-click on "available". The DairyComp item list will be displayed. Browse to the item you wish to have displayed and double-left-click on it.

Deleting an Item from the List

To delete an item that is displayed double left-click on the item. The DairyComp item list will be displayed. Press the Escape key (Esc).

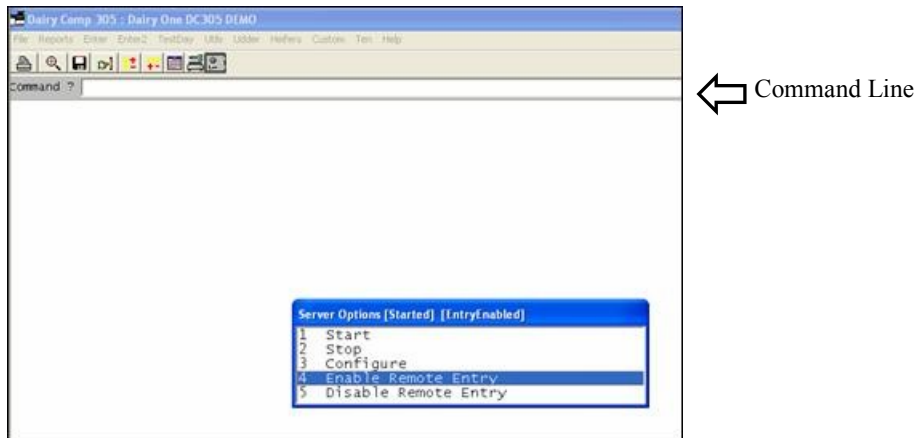
Entering Data

Enabling Data Entry

Remote Entry must be enabled before entering data into Pocket CowCard. This is done via the SERVER\R command. If Remote Entry is not enabled, incoming external entries are ignored.

Important Note: Events entered in Pocket CowCard cannot be viewed until they are posted back to DairyComp and Refresh Herd is run.

Run the **SERVER\R** on the command line in DairyComp, and select **Enable Remote Entry**.



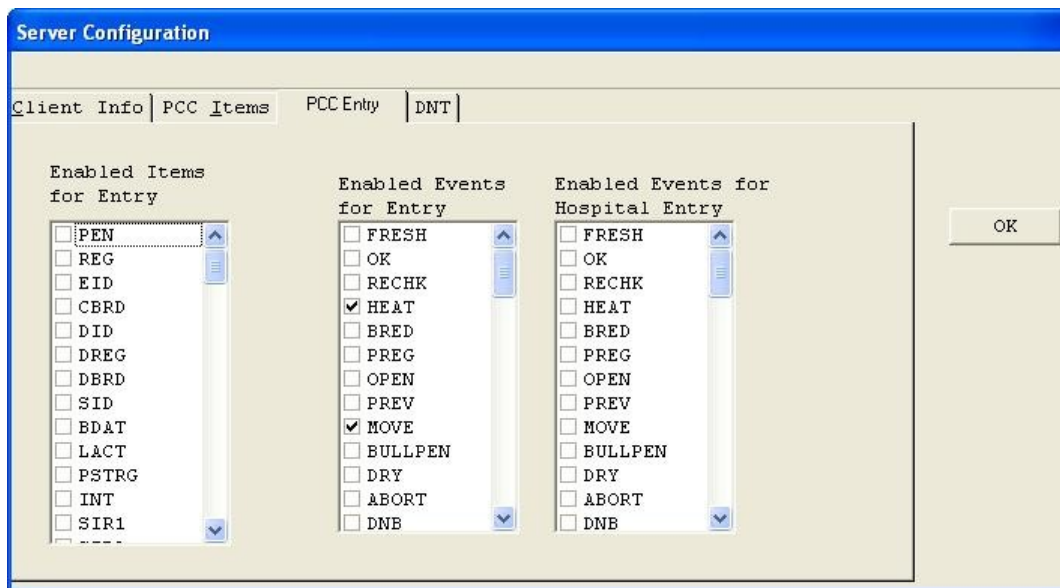
Entering Events

By default, Any event can be entered from the Event tab on a cow record.

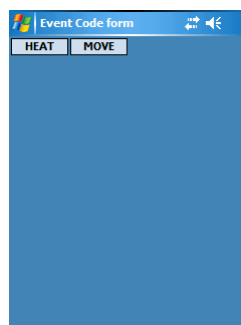
Steps to Enter Events:

1. Pull up a **cow record** in Pocket CowCard
2. Tap and hold down anywhere on the event screen
3. Select the **event to enter** and the **date it occurred**
4. **Add a remark** if desired
5. Tap **OK**.

It is also possible to restrict the events that can be entered via the Axim via the “Enabled Event for Entry” list in the PCC Entry tab of the Server configuration dialog. For example, to restrict the permitted events to HEAT and MOVE, run the Server command, select Configure, Select PCC Entry, and check the events that should be permitted. (Note that if no events are permitted, we assume that it hasn't been configured and allow all events).

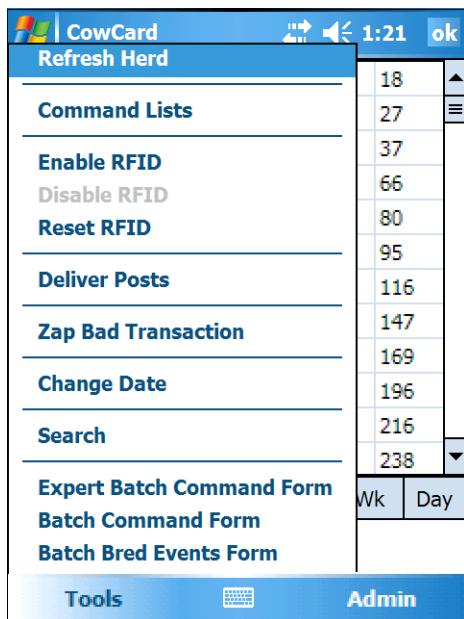


Perform a herd refresh to update the data on the Pocket CowCard, and you should see only two event choices in the event entry dialog.



RFID Data Entry

If your hand held device supports Bluetooth communications you may use a VAS-approved RFID wand. RFID tag scanning helps to eliminate data entry errors due to cow ID typos. RFID tag scanning also accelerates the data entry process which leaves you more time to attend to other activities.



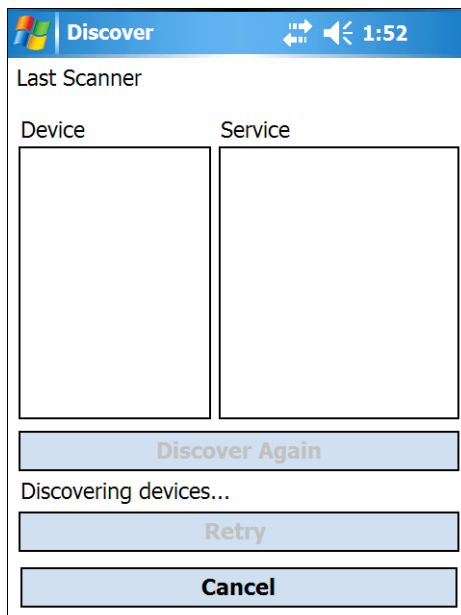
Tools Menu

All forms that have cow data entry capabilities support RFID scanning. These forms include the [main Pocket CowCard form](#), the [command list forms](#), and [all three batch command forms](#).

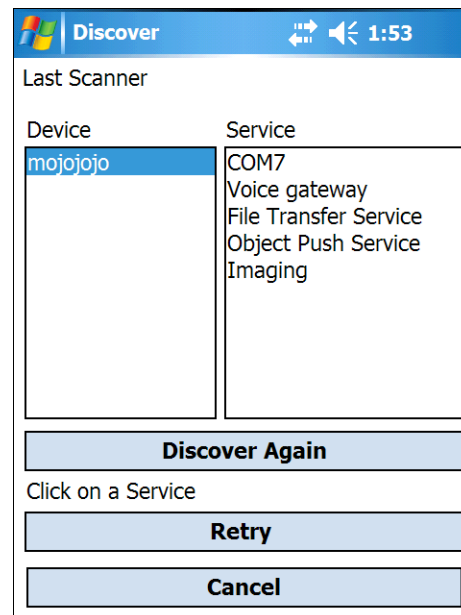
You may activate RFID scanning for the main Pocket CowCard form by tapping **Tools > Enable RFID**. All other forms will have a button dedicated to enabling the RFID scanning functionality.

The first time you Enable RFID you will be presented with a form to help you discover any available RFID devices. If no devices appear in the devices list on the left side of the form, ensure that your RFID wand is powered-on and tap **Discover Again**. After you select the RFID device from the list that you wish to use, you then have to select the Service.

The hand held will remember what device was last used and will attempt to communicate with that device the next time you want to enable RFID. If for some reason the hand held can not communicate with the RFID device, you will have to repeat the Device and Service selection process.



RFID Device Discovery



RFID Device Service Selection

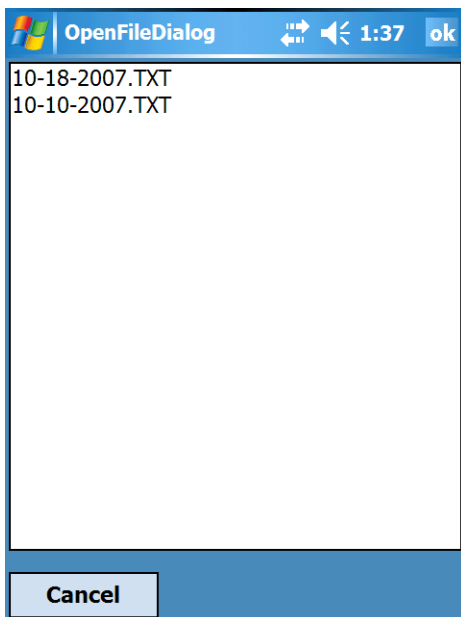
Batch Entry

For repeated entry of the same type of information use either the Batch Command, the Expert Batch Command, or the Batch Bred Events Form. Each of these forms are [RFID-Enabled](#) for efficient and error-free cow identification. Tap the **Enable RFID** button to establish Bluetooth communications with your RFID reader wand.

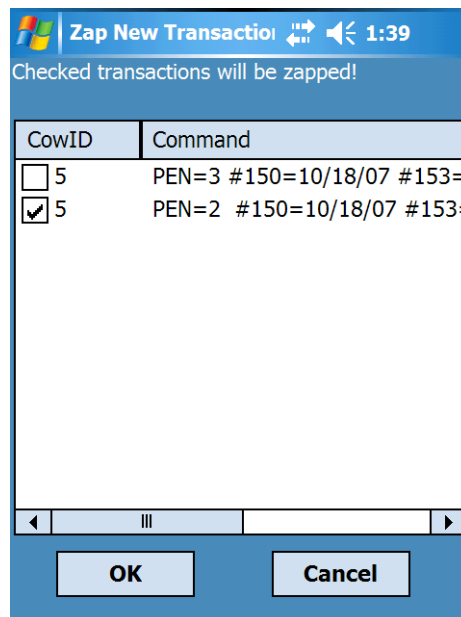
Note: You must have properly selected your RFID Port in the [Setup form](#) for RFID scanning to work.

The Batch Command Form only allows the batch entry of a single field while the Expert Batch Command Form allows multiple fields to be entered, but you have to manually construct the expert command string.

Each of the batch forms provides a **Review** button to display entered transactions. Tapping the Review button will display a form to select which day's transactions to view. After you have selected the day's transaction file, the Zap Transactions Form will be displayed.



List of Transaction Files



Zap Transactions Form

Zap Transactions Form

The Zap Transactions Form can be accessed via the Tools, Zap Bad Transaction menu or via the Review button in the batch forms. The Zap Transaction Form allows you to delete individual transactions/entries from the day's transaction file. This is useful for eliminating incorrect or duplicate transactions.

All three batch forms also provide a command list drop-down listbox to control the list of cows for which you are entering transactions. All entered cows will be validated against the selected command list.

Batch Command Form

Tap **Tools > Batch Command Form** to display the Batch Command Form. Select the field that you would like to batch enter from the batch command drop-down list. Then tap the blue text box to the right of the batch command drop-down list to set the value for that field for each cow entered.

Batch Command Form

Type	Description	Example
Static	A static value that is assigned to every cow entered.	PEN=5
Dynamic	A dynamic value that is created by entering characters in a virtual keyboard for each cow entered.	REM=?
Pick List	A semi-colon-separated list of items, one of which is to be selected by the user for each cow entered.	PEN=1;2;3;4;5
Automatic Numeric Increment/Decrement	A numeric value that is automatically incremented or decremented for each cow entered.	SAMPLE=101++ SAMPLE=101--

To Validate entered ids against cows in the herd, Select “ALL” for cows in list and check “Validate Tapped Ids.”

Expert Batch Command Form

Expert Batch Command Form

Example Pick List

Tap **Tools > Expert Batch Command Form** to display the Expert Batch Command Form. This form supports the same fields and value types as described in

the Batch Command Form section. The drop-down list of single fields has been replaced with a text area where you can enter your own batch command string which can contain several fields and value types. To Validate entered ids against cows in the herd, Select “ALL” for cows in list and check “Validate Tapped Ids.”

Batch Bred Events Form

Tap **Tools > Batch Bred Events Form** to display the Batch Bred Events form. This form is exclusively used for bred events, unlike the generic Batch Command and Expert Batch Command forms which do not support the intricacies of breeding. To Validate entered ids against cows in the herd, Select “ALL” for cows in list and check “Validate Tapped Ids.”

Batch Bred Event Form

Tapping the ServSire field will display the Enter Sire form which will list the last two sires for the entered cow, if known.

Sire Entry Form

The Date, Tech, and ServSire fields are preserved between id entries to cut down on unnecessary reentry.

Command Lists

Making New Command Lists in DairyComp

Command lists are reports that are sent from DairyComp 305 to Pocket CowCard.

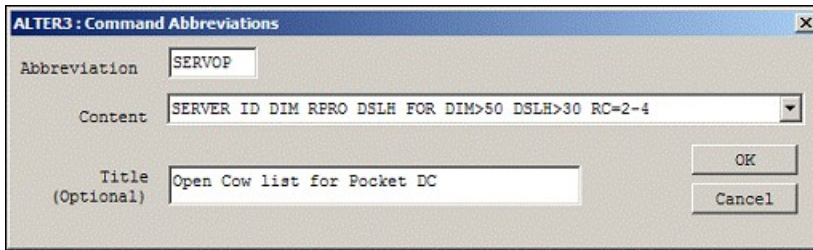
1. **Making commands to send to Pocket CowCard – The SERVER Command**
Begin the Command with SERVER instead of LIST or Show. The command is then automatically sent to Pocket CowCard the next time Tools > Refresh Herd is run.

Pocket CowCard commands are made in very much the same way as commands that begin with LIST or SHOW. The SERVER command can recognize FOR and BY statements, but most switches are not supported. A command that begins with SERVER behaves like a SHOW command when run from the command line in DairyComp 305.

SERVER Command Examples:

```
SERVER ID PEN RPRO MILK DCC  
SERVER ID PEN DIM 305ME DUE FOR PEN=1-5 DUE>0
```

To Save a Command, go to **ALTER > COMMANDS > Add a Command**



ALTER3 : Command Abbreviations

Abbreviation:

Content:

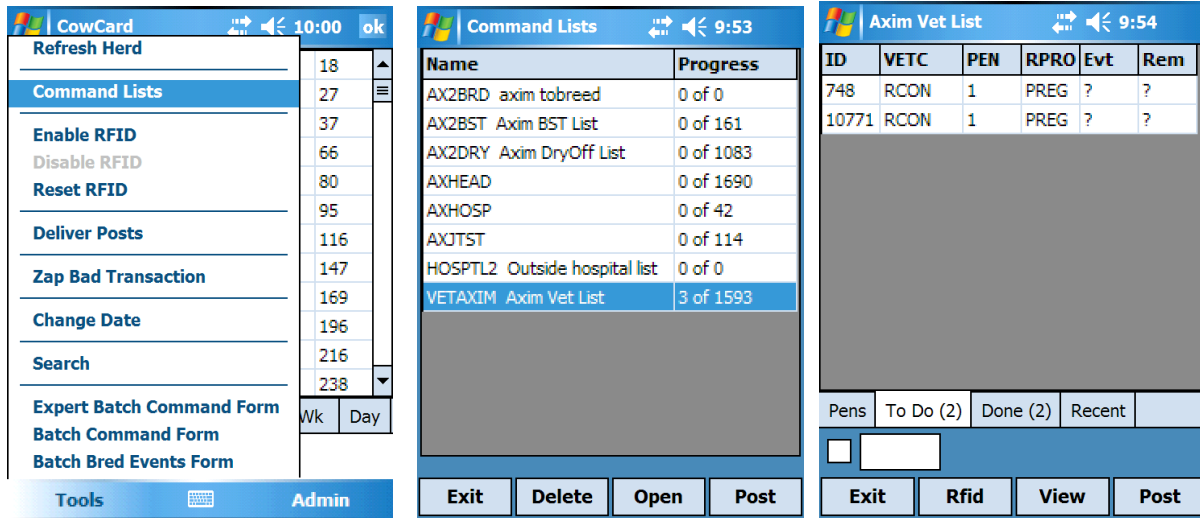
Title (Optional):

OK Cancel

2. Select **Tools > Refresh Herd**. To transfer Command Lists to Pocket CowCard.

Working With Command Lists

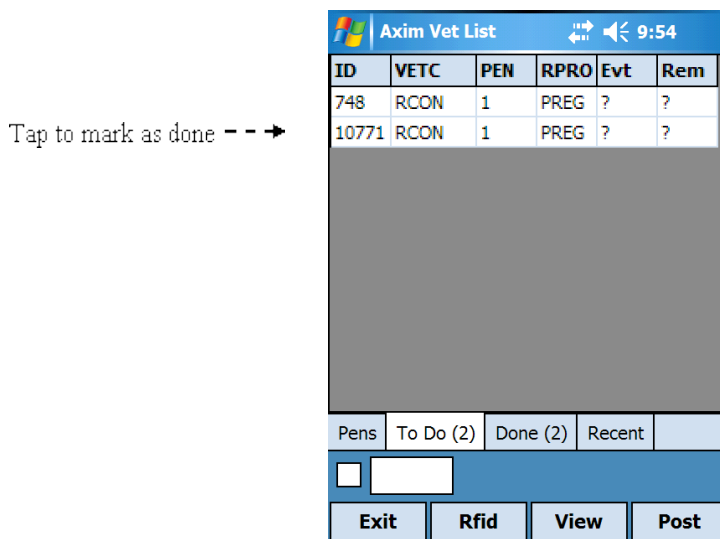
Select **Tools > Command Lists** to see a list of available commands. Then tap the **LIST** to view it. All commands that begin with SERVER are sent to the Pocket CowCard on each Refresh Herd.



There are three tabs at the bottom of the report-view screen.

Tab	Description
Pen	Tap a pen to view
To Do	List of cows that have not been Found/Done
Done	List of cows marked as Found/Done.
Recent	List of recently view cows that are not marked as Done.

When viewing a **LIST**, tap on a **cow number or tap the box**, then enter the **number** to move a record from “ToDo” to “Done”. If data entry is enable, you can Tap on **Post** to make changes available to DairyComp the next time posts are delivered to the server. (see [Refresh Herd](#))



Command List Anatomy

Button	Description
Exit	Exit the form without Posting.
Rfid	Enable RFID scanning.
View	View the selected Cow.
Post	Post the command list to send changes to DairyComp

Pen Validation

Pen Dialog 3:30

Cow ID= 9799
Pen in DC305= 3
Current Pen= 102

Assign DC305 Pen as 102

Keep DC305 Pen as 3

Reassign DC305 Pen

I'm in a new pen

Don't ask me again

View Cow's Record

Wrong Pen Form

The command lists allow you to specify which pen you want to work with by selecting the pen from the list on the *Pen tab*.

Assuming you have selected a pen, all cows entered or scanned, will be validated against the selected pen. If the cow's pen assignment does not match your pen selection, the Wrong Pen Form will be displayed. This form allows you to resolve the issue.

If you choose to reassign the cow to a different pen, the Pen Reassignment Form will be displayed giving you the

choice of all of your pens. If available, pen descriptions will appear beside their numeric id.

PenListForm 3:31 ok

Select New Pen Assignment

1
2
3
4
5
6
7
8
9
10
11
12
13
14
17
18

Cancel Assign Pen

Pen Reassignment Form

Deleting and Posting a Command List

Command Lists 9:53

Name	Progress
AX2BRD axim tobreed	0 of 0
AX2BST Axim BST List	0 of 161
AX2DRY Axim DryOff List	0 of 1083
AXHEAD	0 of 1690
AXHOSP	0 of 42
AXJTST	0 of 114
HOSPTL2 Outside hospital list	0 of 0
VETAXIM Axim Vet List	3 of 1593

Exit Delete Open Post

Delete / Post a Command List Command List Form.

On [Refresh Herd](#), Pocket CowCard will assume any non-posted, open list is a work in progress and will rename the open list with a BAK extension. The latest command list from DairyComp will then be downloaded. The BAK command list is not accessible from Pocket CowCard, but is available via the File Explorer.

Note: A Command List is considered **Open** when a cow record has been tapped and moved to the Done tab.

Delete: If you want to abandon the changes you've made to a command list, delete it.

Post: Queue the changes from the command list for delivery to DairyComp. **Note:** [Data Entry must be enabled](#).

You can also Post a list via the **Post** button in the selected list's

Delivering Posted Command Lists to DairyComp

1. Ensure you have posted all open Command Lists that you want to transfer.
2. Place the Pocket PC in the cradle.
3. Tap **Tools > Deliver Posts**.
4. After the changes are posted, tap Tools > Refresh Herd to see the changes in Pocket CowCard.

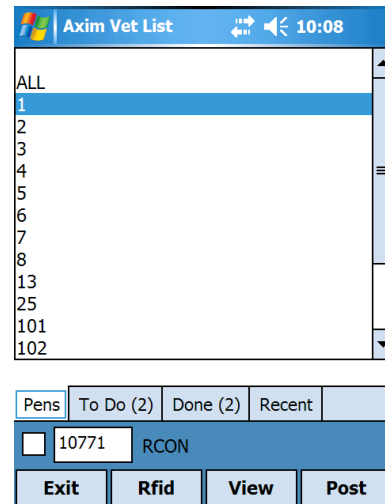
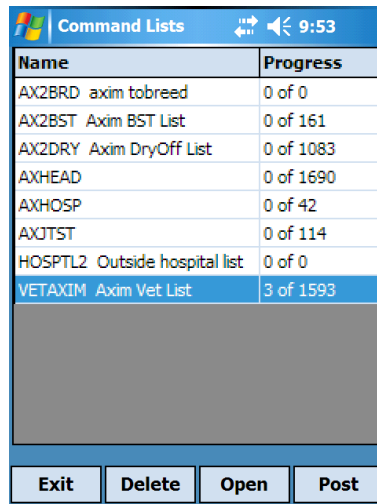
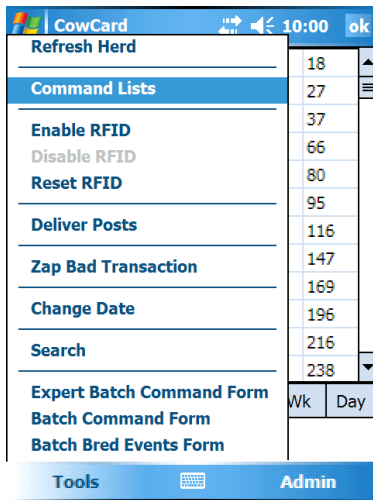
Using the Vet Command List

Making the Vet List Command List

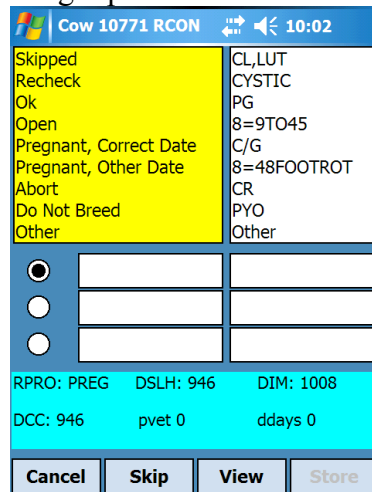
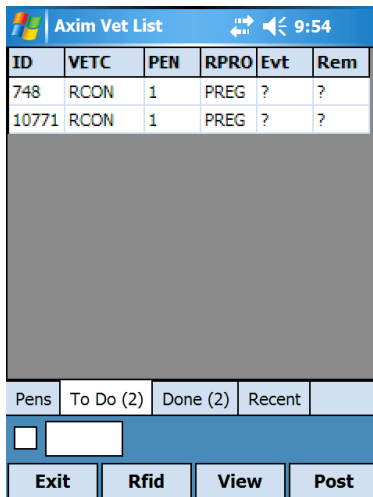
Add the W to a SERVER command in DairyComp 305 to create a vet list for Pocket CowCard.

Entering Vet List Results

1. Select **Tools > Command Lists** to see a list of available commands.
2. **Tap** the **vet list** to view it.
3. Select a **pen** to check.



4. Tap on a **cow** **OR** tap the box, then enter a **cow number**.
5. Select a **Result** from either the left panel **OR** a **function key** from the right panel.
6. Click **Store** to finish.



Entering Other Events

Any event can be entered from the vet entry screen using the Other selection.

1. Select a cow from the vet list, tap **Other** in the left panel. The Event Code form will automatically come up on the screen.

Cow 10771 RCON 10:07

Skipped
Recheck
Ok
Open
Pregnant, Correct Date
Pregnant, Other Date
Abort
Do Not Breed
Other

CL,LUT
CYSTIC
PG
8=9T045
C/G
8=48FOOTROT
CR
PYO
Other

RDA

RPRO: PREG DSLH: 946 DIM: 1008
DCC: 946 pvet 0 ddays 0

Cancel Skip View Store

Event Code form 10:04

XID	HOSP	MAST
METR2	MFEV	LAME
RETAINP	DII	DR
VPNUE	TREATED	SALMON
DI	3TEAT	FATLIVR
HARDCAF	HARDWAR	PNUE
TRTMNT	EDEMA	FOOTROT
PARALYS	FUO	DR2
PUSHER	WELL	TOCLOSE
MAST2	BSTART	FOOTCUT
WATCHBF	SAD	KETOSIS
LDA	RDA	PROLAPS
INDUCE	MISSYNC	LAME2
DOWNCOW	ABORT1	PINKEYE
METR1	CULTURE	BVD

← Select an event from the list

2. Add a **remark** and tap **Store**.

Cow 10307 CDRY

Skipped
Recheck
Ok
Open
Pregnant, Correct Date
Pregnant, Other Date
Abort
Do Not Breed
Other

CL,LUT
CYSTIC
PG
8=9T045
TWINS
C/G
8=48FOOTROT
CR
Other

LAME RF

RPRO: PREG DSLH: 175 DIM: 218
DCC: 175 MILK: 39 label6

Cancel Skip View Store

← Enter remarks here.

Entering Pregnant to a Previous Service OR Natural Service

1. Select a **cow from the vet list** and tap on **Pregnant, Other Date**
2. Tap the **breeding date** that best matches the pregnancy diagnosis OR enter the **number of days** in the box.
Note: You will be prompted for a sire if you enter the number of days.
3. Tap **OK** or **Store**

PREV Info

Select a breeding date below, or enter a DCC

Current DCC: 94 New DCC: 117

Date	Days Ago
10/29/07	94 days ago
10/06/07	117 days ago
09/13/07	140 days ago

Cancel OK Store

Entering Abortions using Vet Entry

1. Select a **cow from the vet list** and tap on **Abort** in the left panel.
2. Enter the **number of days since the cow aborted** in the box
3. Check or Uncheck the “Start new lactation” checkbox
4. Select the appropriate reproduction code
5. tap **OK** or **Store**

ABORT

Current DCC: 175

Enter days since cow aborted

2

Start new lactation

Select reproduction code

- Fresh
- Open/OK
- Bred

Cancel OK Store

Using the Hospital Command List

Hospital Form 10:47

Cow: 17 Today: 10/19/07

MKDAT: 10/30/05 BFDAT: 11/17/05
 HPDAT: 10/24/05 DIH: 725
 LTDAT: 10/26/05 PN: 102
 THD: -

The Hospital Command List is used to ensure that hospitalized cows receive the proper treatments. Scanning a tag or manually entering a cow's id will play an audible treatment reminder and display the cow's treatment record.

Date	Evt	Rem	Day
10/25	RDA	PENG60.3	725:3
10/25	TRTMNT	IV	725:2
10/25	TRTMNT	IVDEXM	725:2
10/24	HARDCAF	IVOX	726:3
10/24	FOOTR...	PEN3X	726:3
10/24	MAST2	OX99AL75	726:3
10/24	EDEMA	FUROSOMI	726:2

View

Exit

Hospital Form

Tapping the *View* button will display the cow's event history.

View Cow 17 10:48

Date	Event
10/25/05	RDA PENG60.3
10/25/05	TRTMNT IV
10/25/05	TRTMNT IVDEXM
10/24/05	HARDCAF IVOX
10/24/05	FOOTROT PEN3X
10/24/05	MAST2 OX99AL75
10/24/05	EDEMA FUROSOMI
10/24/05	DI ENDOIV
10/24/05	VPNUE EXN3.20
10/24/05	METR2 PENG60.3
10/24/05	FUO OX60AL35
10/24/05	DR IVBLOAT

Event Item Test

Exit

View Cow 17 10:48

Item	Value
EID	0
PEN	102
DIM	779
RC	2
DSLH	735
TBRD	0
DCC	0
SIR1	-
SIR2	-
REM	IV
BDAT	06/06/02
LSIR	-

Event Item Test

Exit

View Cow 17 10:48

Date	DIM	MK	%F	305	SCC	PEN
10/11/05	41	84	0	23650	0	127
09/06/05	6	51	0	0	0	101

Event Item Test

Exit

If you use the Tap and Hold technique on the Event tab of the View Cow form you may enter a new event for this cow via the Event Code form.

Event Code form 10:48

FRESH	OK	RECHK	HEAT
BRED	PREG	OPEN	PREV
MOVE	BULLPEN		

Admin Menu

The Admin menu is the access point to the Pocket CowCard configuration settings, the Test Network form, and the software upgrade function. You can also determine the software version and license information in the About form. The About form is displayed on startup of Pocket CowCard.

Update by DC305

This function terminates the Pocket CowCard program and launches Microsoft Pocket Internet Explorer and links to a web page served by DairyComp. Your hand held must be cradled and DairyComp must be running on your PC for this function to work properly.

Pocket CowCard also confirms you are running the latest version when you execute **Tools > Refresh Herd**.

Setup

Pocket CowCard must be setup to ensure proper execution. The default selections should be fine for most installations. One thing to note, however, is the RFID Port selection. This can be different between hand held models. AUTO should work with most Dell Axims. The PSION selection is important for use on any Psion hand held devices.

Description	Result
Has IP	169.254.2.1
Pings DC305	True
Parses Overhead	True
Unexpired License	True
Newest License	True
SD ID Licensed	False 98AC522E
PPC ID Licensed	True

Exit

Test Network Form

CowCard					
3	8	10	13	17	18
19	20	21	23	26	27
28	32	33	35	36	37
40	46	47	49	50	66
67	68	69	73	76	80
82	84	87	91	94	95
104	106	110	111	112	116
122	126	127	128	134	147
148	152	154	158	159	169
170	174	176	188	190	196
197	203	205	209	210	216
220	225	227			

Setup
Update by DC305
Test Network
About

Herd: Cow Event: [] Item: Idle

Tools **Admin**

Admin Menu

SetupForm	
Server	USB
Custom Addr	
Items	Page 1
Initial Pane	Events
Language	ENGLISH
RFID Port	AUTO
<input checked="" type="checkbox"/> Post all scans	<input checked="" type="checkbox"/> SD Archive
Exit	

Setup Form

Test Network

This form allows VAS support staff to assist you in pinpointing communications issues on your network or with the Pocket CowCard <-> DairyComp connection.